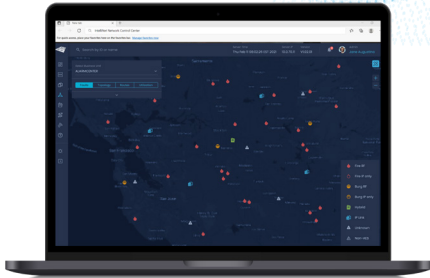




# IntelliNet® Network Control Center (INCC)

## THE COMPLETE END-TO-END NETWORK MONITORING AND MANAGEMENT PLATFORM



### KEY FEATURES

**Supports Up To 99 Business Units**

*One platform can handle the largest of networks*

**Remote Capabilities For TTL Settings, Resetting a Subscriber, and More!**

*Less site visits will save you time and money.*

**The Ability To Create Users Based On Individual Roles**

*You decide who has access and when.*

**View Live Traffic By Overall Network, Business Unit, Or Subscriber**

*More visibility into your network performance.*

**Kiosk Mode Feature**

*Quickly view a snapshot of your network performance.*

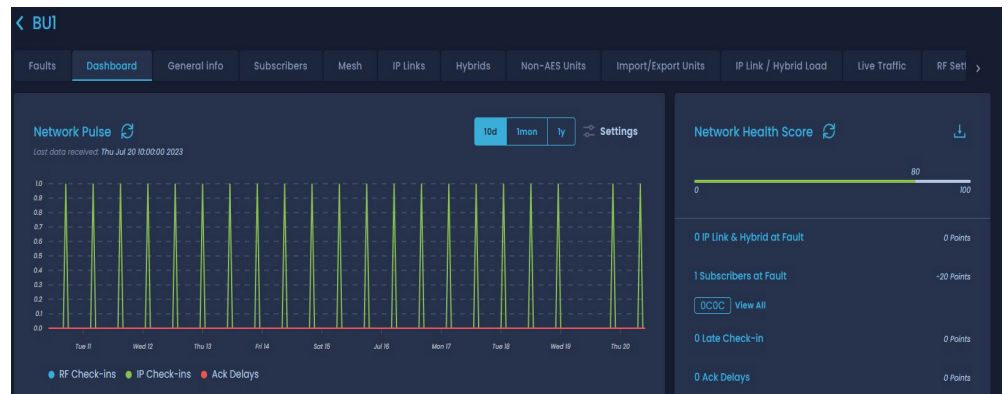
**User-Friendly And Intuitive Interface**

*Easily manage all aspects of your network from one screen.*

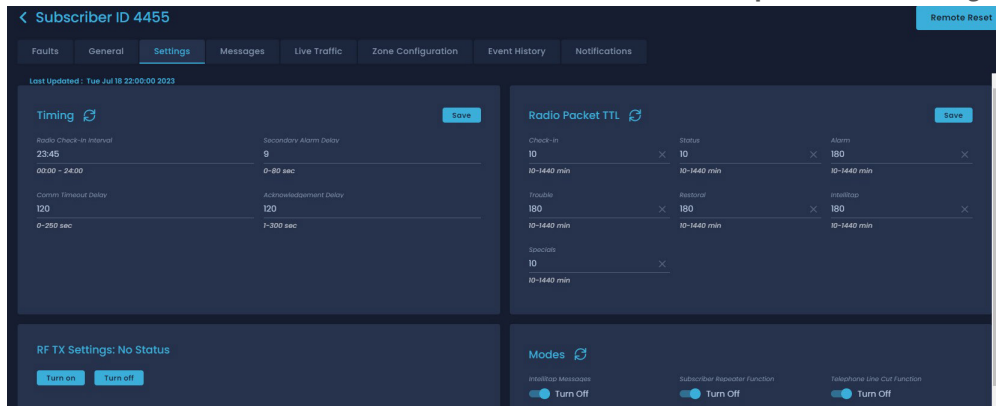
AES is excited to introduce the IntelliNet® Network Control Center (INCC). This software combines the capabilities of the MultiNet Receiver (MNR), including IP control and the Network Management System (NMS), into one platform.

Now, you no longer need to rely on costly proprietary hardware. The INCC software from AES allows you to receive and send alarm signals to central station alarm automation software and monitor all facets of your network from a centralized dashboard.

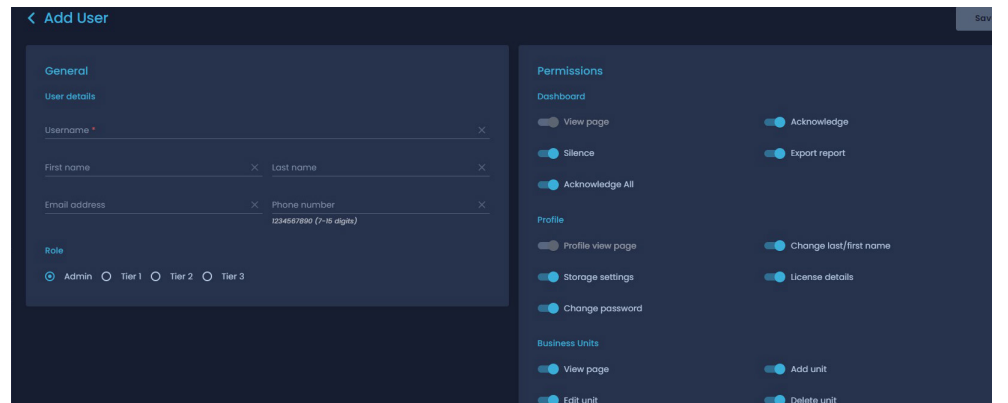
### Business Unit Health Score



### Remote Capabilities TTL Settings



### Create User Tiers & Permissions



## TECHNICAL SPECIFICATIONS

### Server Hardware Requirements

1 TB disk drive storage

Intel® Xeon® quad core microprocessor with minimum speed of 2.4 GHz, or similar specification x64 Intel® compatible microprocessor

8 GB RAM

USB Type-A or Type-C (USB 2.0/3.0)

100 Mb Ethernet connection

### Operating System

Ubuntu server 20.04.4 (64 bit) \*Note newer versions will not work

### Database Requirements

No requirements - built-in DB will be used.

### Certifications

UL 864, Control Units and Accessories for Fire Alarm Systems

UL 2610, Commercial Premises Security Alarm Units and Systems

NYFD and CSFM Approved

### Environment

Software must be installed in temperature environment maintained between 55-95°F (13-35°C)

## PART NUMBERS

### 8705 IntelliNet® Network Control Center (INCC)

8705-T1	IntelliNet Network Control Center Software (Includes two instances Primary/Secondary) For up to 4,999 accounts.
8705-T2	IntelliNet Network Control Center Software (Includes two instances Primary/Secondary) For 5,000+ accounts.



[aes-corp.com](http://aes-corp.com)

AES Corporation | 285 Newbury St. | Peabody, MA 01960 United States